



Success

Solution

Business Strategy

Innovation
Branding
Solution
Marketing
Analysis
Ideas
Success
Management

Innovation
Branding
Solution
Marketing
Analysis
Ideas

WORK



CLERMONT COUNTY OHIO

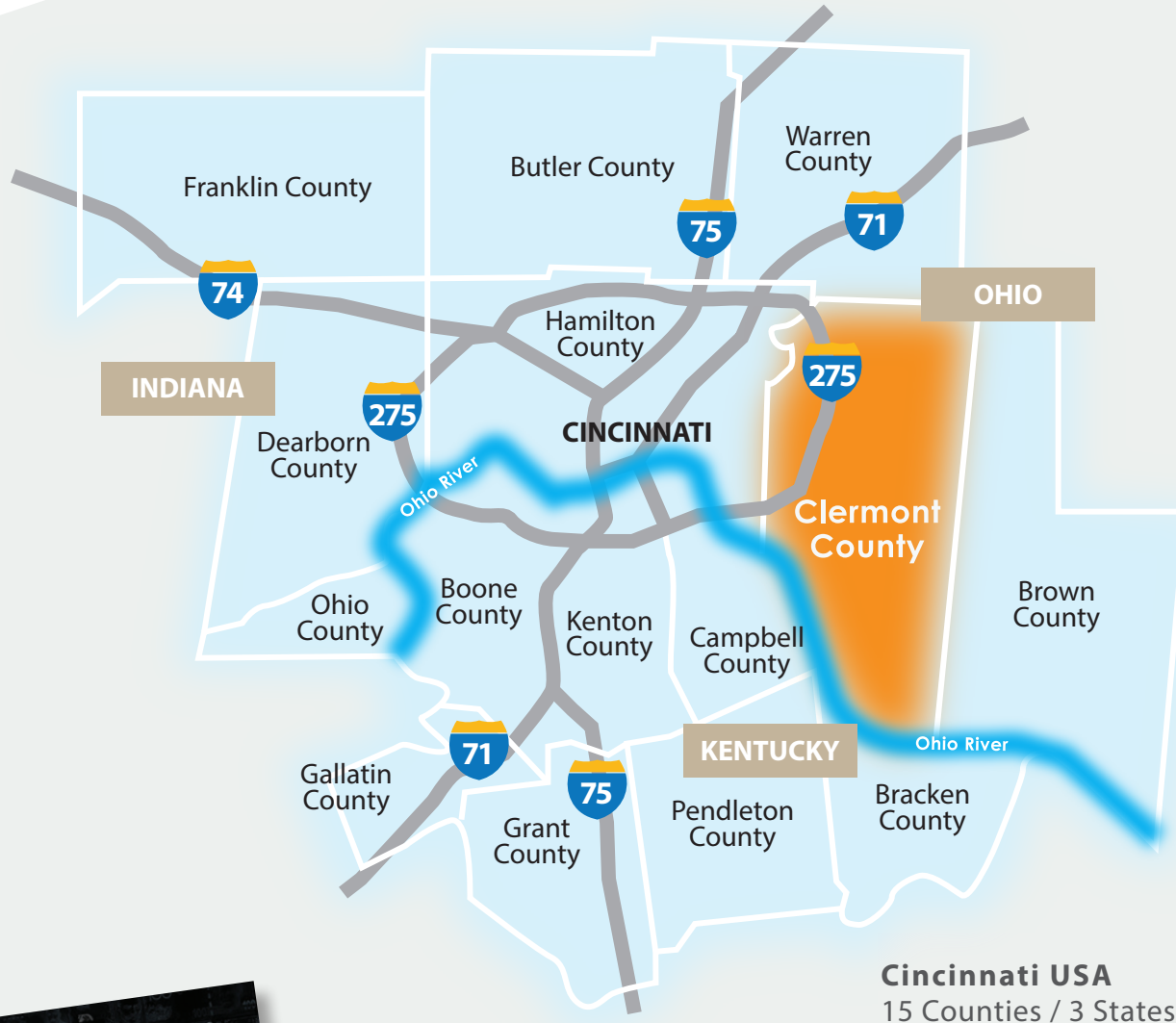
OPPORTUNITY + SUCCESS

Grow here

THE REGION

Grows here

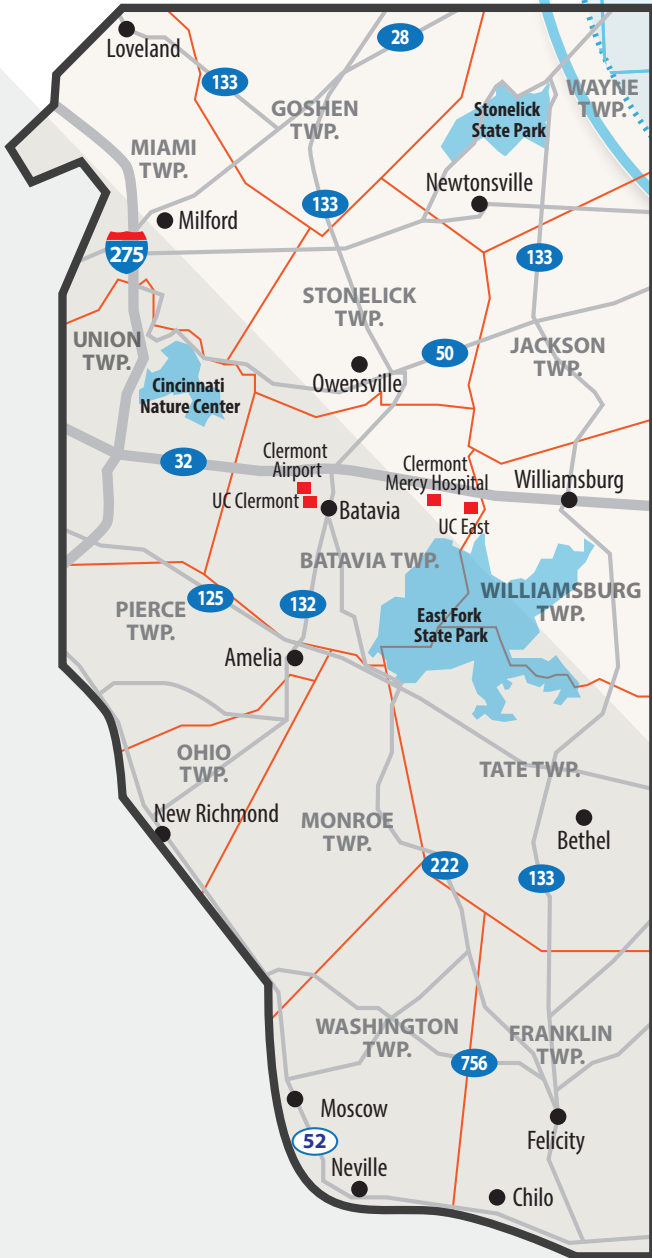
Located just east of downtown Cincinnati, Clermont County's population is 208,601 while the Cincinnati metro area comprises 2.2 million residents. With its own labor force of almost 110,000 people, Clermont County is well positioned in the Greater Cincinnati area, whose labor force is nearly 1.5 million.



Site Selection Magazine recognized the Cincinnati region as a top-10 metro in 2021 for commercial and industrial projects, ranking seventh in total projects and second in projects per capita.



US News ranked Cincinnati in the Top 45 of metro areas to live in for 2022 and as the number one metro in Ohio.



Clermont County

FORTUNE



Cincinnati now boasts 9 Fortune 500 company headquarters, and 14 Fortune 1000 company headquarters. Cincinnati has more headquarters per million residents than New York, Boston, Los Angeles or Chicago.



The Cincinnati/Northern Kentucky International Airport is consistently highly ranked. Skytrax named CVG the #5 airport in North America in 2022.

INNOVATIVE BUSINESSES

Grow here

Clermont County's largest and fastest growing employers are professional service businesses. American Modern Insurance Group (AMIG) and Total Quality Logistics (TQL) have invested nearly \$45 million in new headquarters facilities and are Clermont County's two largest employers.



Many of Clermont County's largest employers have found the young professional talent they need to help their companies grow here. Over 50% of the county's labor force commutes to other communities for employment opportunities. Clermont County has the hidden workforce companies need, right in our own backyard.

The strength of the workforce's knowledge base is demonstrated by the presence of Siemens PLM and Tata Consultancy Services' North American Delivery Center. These two companies combined employ over 1,000 computer programmers and software engineers in Clermont County.





5



Clermont County is home to many defense industry advanced manufacturers, such as L-3 Fuzing & Ordnance and Engineered Mobile Solutions. The county's rich manufacturing tradition is best exemplified by Milacron Plastics Machinery, a plastics machinery OEM founded in 1884.



5

CONTINUAL IMPROVEMENT

Grows here



State Route 32 serves as Clermont County's most vital transportation artery, bisecting the county from west to east. State Route 32 has been undergoing a major transformation, as over \$80 million in improvements are underway. The I-275 interchange has been reconstructed to improve the flow of traffic, and travel times will be further decreased as signals are removed and access roads rerouted.



This diagram shows improvements that have been made and those that are still to come.



2020 Improvements - CCTID Managed

- 1 Clepper Lane extension to Bach-Buxton Road
- 2 Old SR-74 widening, Schoolhouse Rd to GlenEste-Withamsville Rd, with access improvements at Old SR-74, Tealtown Rd, and Paul Dr

Ongoing Improvements - ODOT Managed

- 3 Bach-Buxton Rd to Marian Dr improvements (2022)
- 4 New interchange at Bach-Buxton Road & SR-32 (2022)
- 5 Additional travel lanes on westbound OH-32 (2022)
- 6 New eastbound SR-32 ramp to Clepper Lane (2022)
- 7 Old SR-74 improvements between Schoolhouse Road & SR-32 (2023)
- 8 Partial interchange at GlenEste-Withamsville Road (2024)

Planned Improvements

- 9 Signal improvements at SR-32 & Olive Branch-Stonelick Road Interchange



Clermont County companies benefit from the proximity to the larger regional infrastructure of the Cincinnati metropolitan area. In addition to the Clermont County Airport, which is increasing its runway length to 4,900' to accommodate corporate jets, companies in Clermont County can utilize the Greater Cincinnati/Northern Kentucky International Airport (CVG), which is a direct 30-minute drive away. CVG offers non-stop service via 12 different airlines and is one of three global super-hubs for DHL air cargo services.

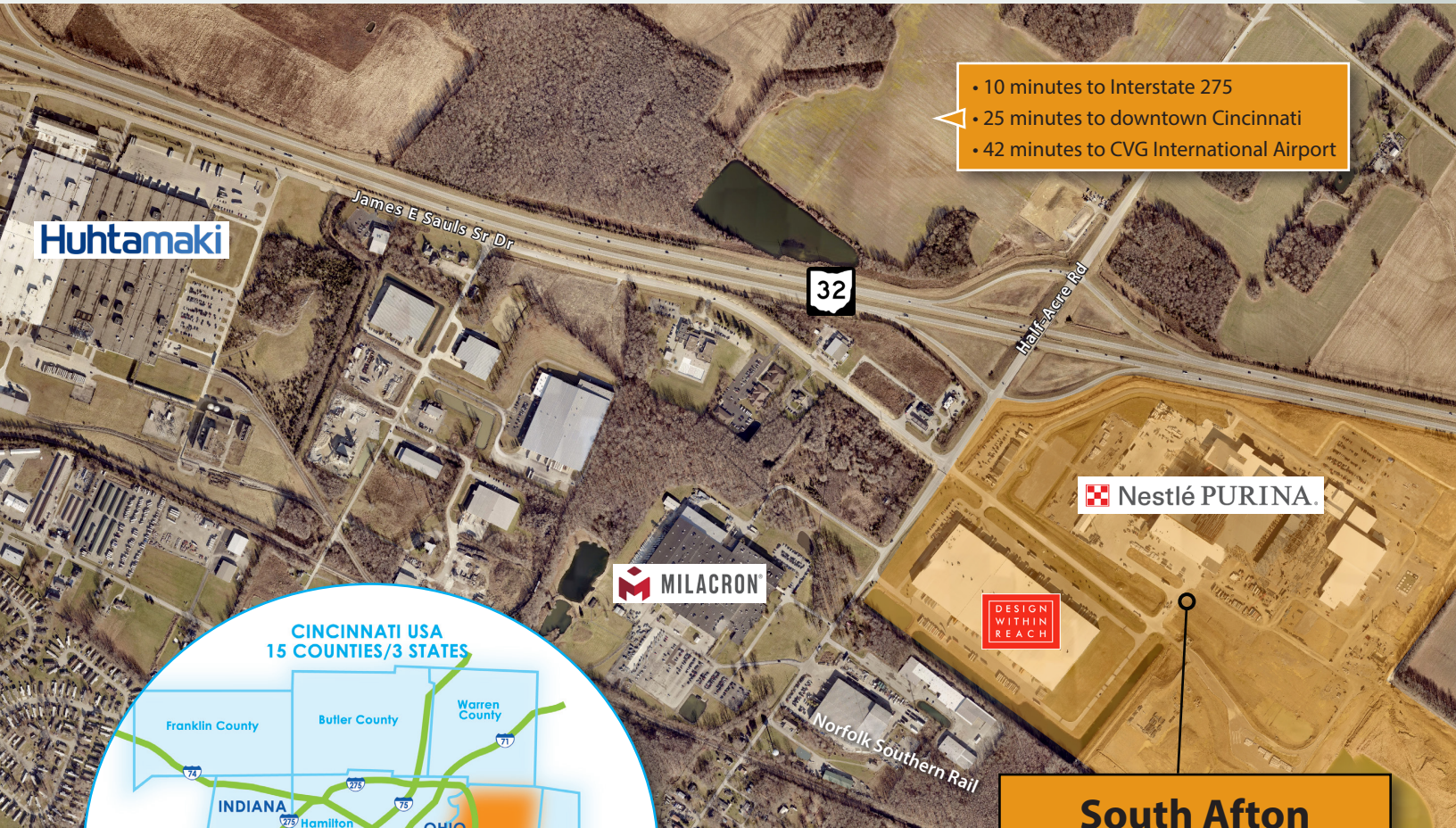
Freight services are provided by several companies in the Greater Cincinnati area. The Queensgate rail yard, just west of downtown Cincinnati, is one of the largest and most efficient switching facilities in the US. Norfolk Southern has a Class III line directly serving several communities in Clermont County. The line is operated by Cincinnati East Terminal Railway, which also owns and operates a new transload facility in the Milford area.



SOUTH AFTON COMMERCE PARK PROMISES MORE OPPORTUNITY TO

Grow here

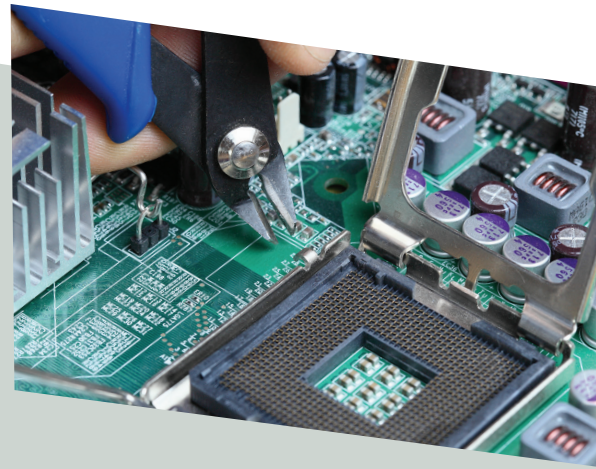
South Afton Commerce Park is Clermont County's largest planned industrial park. Located directly on State Route 32 at Half Acre Road, this 242 acre industrial park is just 11 miles east of I-275. In 2018 the site was certified by JobsOhio as site-ready and shortly thereafter, Design Within Reach announced a 617,000 square foot distribution facility in the park's southwestern corner. In 2020, Nestle-Purina announced plans to locate a \$550 million pet food facility on the remainder of the site, creating 300 high-paying jobs in Clermont County.



**South Afton
Commerce Park**

By the numbers...

- Immediate access to SR 32 via Half Acre Road
- 10 minutes to I-275
- 7 minutes to Clermont County Airport
- 25 minutes to Cincinnati
- 42 minutes to CVG International Airport
- Population: 1.0 million people within 25 miles;
2.5 million people within 45 miles
- Workforce age 16+: 472,360 workers within 25
miles; 1.1 million workers within 45 miles
- Over \$600 million in investment dollars
- More than 350 jobs and \$11 million in payroll
- Almost 2,000,000 square feet in industrial and
warehousing space



QUALITY OF LIFE

Grows here

Clermont County residents are attracted to the county's great neighborhoods and historic districts set against a backdrop of rolling hills and meandering waterways. These vibrant landscapes are just a short drive from Cincinnati's rich arts and culture, professional sports and recreational offerings. The city of Cincinnati offers some of the nation's oldest professional opera, symphony and ballet companies. Professional sports enthusiasts can enjoy the Cincinnati Reds — the world's first professional baseball team — FC Cincinnati, and the Cincinnati Bengals, all just a short drive from Clermont County.



Clermont County's beautiful natural environment provides residents with a wealth of outdoor recreation activities. East Fork State Park is one of Ohio's largest parks and features hiking, biking, and equestrian trails. Harsha Lake at East Fork State Park features public beaches, and has a world-class rowing facility that regularly hosts Olympic trials and NCAA tournaments.





The Little Miami Scenic Trail offers more than 50 miles of paved trails ideal for walking, running and biking. Nearly 13 miles of the trail run through Miami Township, connecting the cities of Loveland and Milford. The Williamsburg to Batavia Hike Bike Trail offers 6 miles of paved trails, with an additional 7 miles planned.



Clermont County offers an assortment of shopping and dining choices in its main retail corridor known as Eastgate, as well as specialty shops and unique restaurants in historic downtown Milford, Loveland and New Richmond.

Opportunity for urban, suburban, and rural living all converge in Clermont County. From walkable small-town streets to rural country roads, Clermont County offers a wide-range of lifestyle options to meet the needs of a diversified populace.



GROWTH AND OPPORTUNITY

Begins here



Names You Know Grow Here
You're in good company in Clermont County



SIEMENS



Nestlé PURINA.



Huhtamaki

INTERNATIONAL  PAPER



CLERMONT
COUNTY OHIO

Department of Community + Economic Development
101 East Main Street | Batavia, Ohio 45103 | 513-732-7825
www.clermontcountyohio.biz